



A REPUTATION IS BUILT
ONE REPLACEMENT PROJECT
AT A TIME.

At Marvin, we know that you depend on our quality to keep working for you long after the job is done. However, success requires more than just having the right products. That's why we offer some of the best service and support around.

Discover a smarter way to replace. Find your local Marvin replacement partner at marvin.com

©2019 Marvin Lumber and Cedar Co., LLC. All rights reserved.
®Registered trademark of Marvin Lumber and Cedar Co., LLC.



SAVE THE DATE FOR OUR 2024 BUILD & REMODEL EXPO

JANUARY 27-28, 2024
MADISON MARRIOTT WEST CONVENTION CENTER
WWW.BUILDREMODELEXPO.COM

NARI TOUR OF REMODELED HOMES

Sunday, May 21, 2023 | 9:30 am - 4:30 pm

NARIMadison.org



10
Tour
Homes

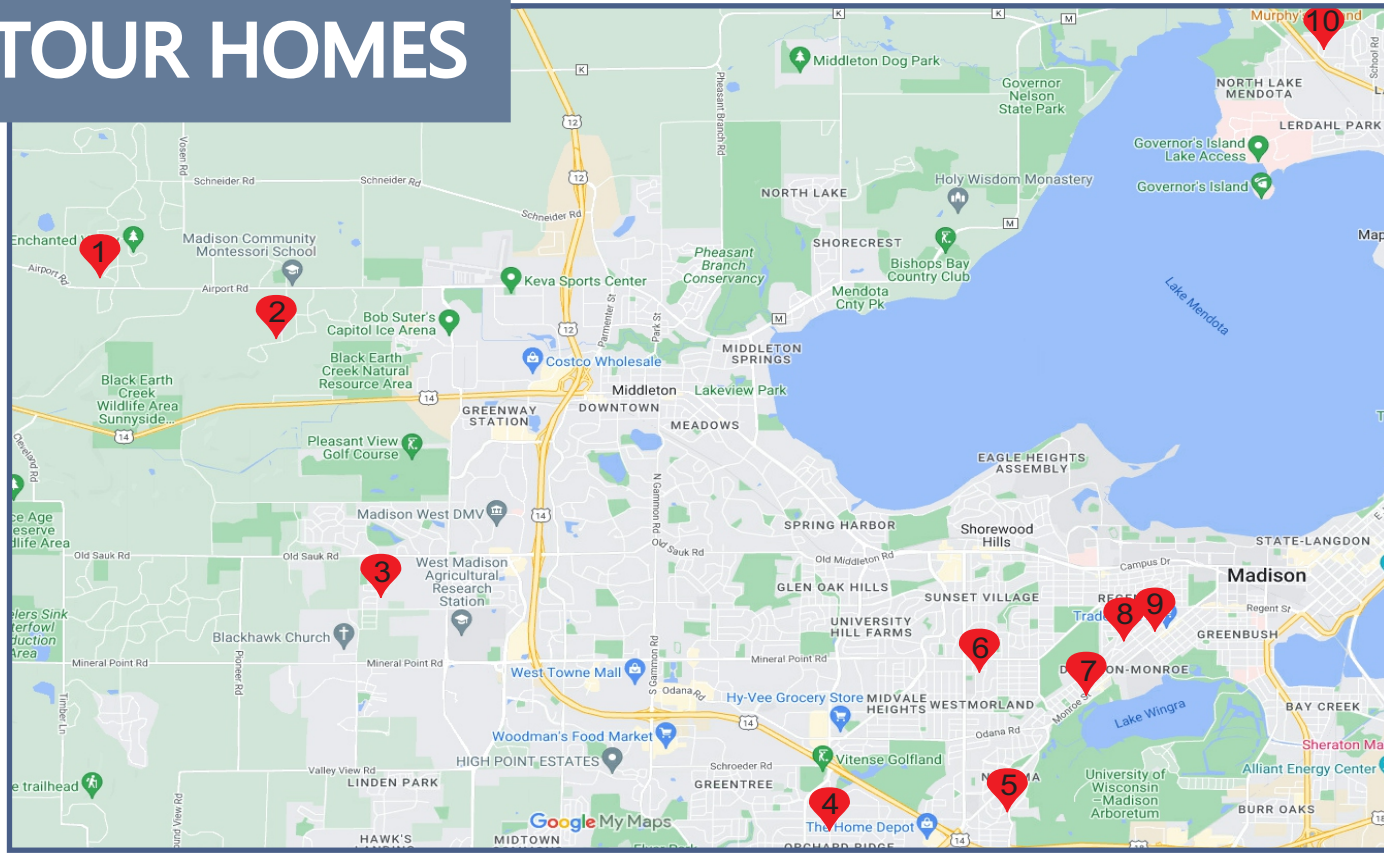


- SITE 1 - Home Works Remodeling - 7836 Big Timber Tr, Middleton
- SITE 2 - Degnan Design-Build-Remodel - 4505 Shooting Star Ave, Middleton
- SITE 3 - Vive Home Transformations - 463 Fargo Tr, Middleton
- SITE 4 - Time 2 Remodel - 5501 Dorsett Dr, Madison
- SITE 5 - Beckman Builders - 1114 Seminole Hwy, Madison
- SITE 6 - Time 2 Remodel - 4314 Keating Terr, Madison
- SITE 7 - Chads Design Build - 662 Pickford St, Madison
- SITE 8 - Precision Design Build - 2226 Fox Ave, Madison
- SITE 9 - Chads Design Build - 1926 West Lawn Ave, Madison
- SITE 10 - Westring Construction - 4514 American Ash Dr, Madison



NARI of Madison, Inc. | 608.222.0670 | 5944 Seminole Centre Ct Ste 110 | Fitchburg, WI 53711

10 TOUR HOMES



- SITE 1 - Home Works Remodeling - 7836 Big Timber Tr, Middleton
- SITE 2 - Degan Design-Build-Remodel - 4505 Shooting Star Ave, Middleton
- SITE 3 - Vive Home Transformations - 463 Fargo Tr, Middleton
- SITE 4 - Time 2 Remodel - 5501 Dorsett Dr, Madison
- SITE 5 - Beckman Builders - 1114 Seminole Hwy, Madison
- SITE 6 - Time 2 Remodel - 4314 Keating Terr, Madison
- SITE 7 - Chads Design Build - 662 Pickford St, Madison
- SITE 8 - Precision Design Build - 2226 Fox Ave, Madison
- SITE 9 - Chads Design Build - 1926 West Lawn Ave, Madison
- SITE 10 - Westring Construction - 4514 American Ash Dr, Madison



VISIT NARIMADISON.ORG FOR INTERACTIVE MAPS

1926 WEST LAWN AVENUE, MADISON



NARI MEMBER PARTNERS:
 BRUNSELL LUMBER AND MILLWORK
 CURRAN CABINETRY
 FERGUSON
 HELLENBRAND BROTHERS EXCAVATING
 HELLENBRAND GLASS
 MADISON ALUMINUM PRODUCTS
 MARLING LUMBER/HOMEWORKS
 TNT INSULATION



SITE 9

THIS BEAUTIFUL ADDITION TRANSFORMED A CROWDED KITCHEN INTO A SPACIOUS ROOM THAT ACCOMMODATES MULTIPLE COOKS, A COMFORTABLE EATING AREA, AND A NEW FIRST FLOOR BATHROOM. THE NEW WALK-OUT BASEMENT ADDS FUNCTIONALITY AND ACCESSIBILITY TO THE LOWER LEVEL AS WELL, FOR FUTURE RENOVATION.



Chads Design Build
 608.221.1799

chad@chadsdesignbuild.com
www.chadsdesignbuild.com

SITE 10

BLUE, ORANGE, YELLOW, OH MY! THIS 1979 HOME UNDERWENT A RENOVATION THAT TRANSFORMED THE KITCHEN, BATH, AND FIREPLACE INTO LUXURIOUS, MODERN SPACES. THE NEW KITCHEN BOASTS STAINLESS STEEL APPLIANCES, CUSTOM CABINETS, COLORFUL BACKSPLASH, AND ELEGANT FINISHES THAT MAKE IT PERFECT FOR ENTERTAINING. THE BATHROOM FEATURES A NEW BI-FOLD SHOWER DOOR FOR FUNCTIONALITY AND A WALK-IN SHOWER THAT EXUDES LUXURY. THE UPDATED FIREPLACE IS THE FOCAL POINT OF THE LIVING ROOM, WITH A NEW TILE FAÇADE AND SPECIALTY LIGHTING THAT ADDS A TOUCH OF WARMTH AND COMFORT. THIS REMODEL HAS COMPLETELY TRANSFORMED THE HOME AND EXCEEDED ALL OF OUR CUSTOMERS' EXPECTATIONS.



Westring Construction LLC
 608.441.5435
james@westringconstruction.com
www.westringconstruction.com

4515 AMERICAN ASH DRIVE, MADISON

BEFORE



NARI MEMBER PARTNERS:
 FERGUSON
 MARLING LUMBER/HOMEWORKS
 SHERWIN WILLIAMS

662 PICKFORD STREET, MADISON



NARI MEMBER PARTNERS:
 ABC SUPPLY CO.
 BENJAMIN PLUMBING, INC.
 BRUNSELL LUMBER AND MILLWORK
 DREXEL BUILDING SUPPLY
 FERGUSON
 FOAMTECH
 HELLENBRAND EXCAVATING
 HELLENBRAND GLASS
 MARLING LUMBER/HOMEWORKS
 MONONA PLUMBING AND FIRE PROTECTION
 WINDOW DESIGN CENTER FROM ZUERN

SITE 7

THIS 2-PHASE PROJECT STARTED WITH A NEW FAMILY ROOM ADDITION IN THE BACKYARD, WHICH REPLACED AN AGING BACK PORCH. THE KITCHEN WAS ALSO REMODELED AT THIS TIME. THREE YEARS LATER, WE RETURNED TO ADD A NEW FRONT PORCH, ALONG WITH UPGRADING INSULATION, REMAINING WINDOWS AND SIDING.



Chads Design Build
 608.221.1799

chad@chadsdesignbuild.com
 www.chadsdesignbuild.com

7836 BIG TIMBER TRAIL, MIDDLETON



NARI MEMBER PARTNERS:
 BENJAMIN PLUMBING, INC.
 BRUNSELL LUMBER AND MILLWORK
 CAMBRIA
 NONN'S
 FOAMTECH
 GRAND APPLIANCE
 KOHLER
 R&D DRYWALL
 SERGENIAN'S
 SHERWIN WILLIAMS
 THE HARDWARE STUDIO
 PELLITTERI WASTE SYSTEMS



SITE 1

THIS KITCHEN/POWDER ROOM WAS DUE FOR AN UPDATE, AND THE BALANCE OF THE FIRST FLOOR ENDED UP BEING REDESIGNED TOO. OFFICE AND MUDROOM WERE TURNED INTO A SPACIOUS, EFFICIENT LAUNDRY ROOM WITH AMPLE CLOSED STORAGE. ADJOINING POWDER ROOM GOT A FACELIFT AS WELL. THREE SEASON PORCH WAS ADDED TO ENHANCE USABILITY OF THE SPACE. KITCHEN FEATURES CONTRASTING DISTRESSED ALDER AND SOFT WHITE PAINTED CABINETS, COMBINATION OF CAMBRIA QUARTZ/GRAVITE COUNTERTOPS, KOHLER PLUMBING FIXTURES, SUBZERO APPLIANCES, LED LIGHTING, HARDWOOD FLOORING, CUSTOM TILE BACKSPLASH AND MANY OTHER FEATURED PRODUCTS. A CLASSY, ELEGANT SPACE PERFECT FOR COOKING AND ENTERTAINING IN STYLE.

HOME WORKS
Remodeling

Home Works Remodeling
 608.833.1166

sales@homeworksremodeling.com
 www.homeworksremodeling.com

SITE 8

THIS BEAUTIFUL 1920'S HOME WAS DESPERATE FOR A LARGER KITCHEN AND A BATHROOM ON THE MAIN FLOOR. THIS WAS THE MOTIVATION TO ADD A 400 SF ADDITION. THE GOAL WAS TO SEAMLESSLY EXPAND THE EXISTING HOME AND CREATE A NATURAL FLOW FROM OLD TO NEW. MATCHING DESIGN AND MATERIALS FROM 100 YEARS AGO, AND RENOVATIONS IN BETWEEN, WAS DIFFICULT BUT REWARDING. INSIDE THE ADDITION IS A KITCHEN, BATHROOM, LAUNDRY, AND A MUDROOM. OUTSIDE IS A DECK, PERGOLA, STAMPED CONCRETE PATIO, AND A DETACHED GARAGE REBUILD.

2226 FOX AVE, MADISON



Precision Design Build
 608.575.2733

rob@precisiondesignbuildinc.com
 www.precisiondesignbuildinc.com

SITE 2

THE ORIGINAL HOME WAS A TYPICAL 2003 RANCH. IT HAD A DINING ROOM WITH COLUMNS AND ARCHES, AND A KITCHEN THAT WAS DIVIDED OFF FROM THE GREAT ROOM BY A LARGE WALL. WHILE THERE SHOULD HAVE BEEN PLENTY OF LIGHT IN THIS HOME IT FELT CLOSED OFF AND BLAND. IT DID NOT LIVE UP TO THE EXPECTATIONS OF THE 2020S. WE TRANSFORMED THIS HOME INTO A LUXURY LIVING SPACE USING A MODERN OPEN AND FUNCTIONAL DESIGN. WITH COLLABORATION FROM BELLA DOMICILE THE KITCHEN IS ENORMOUS. WE CREATED A STUNNING OASIS FOR THE PRIMARY BEDROOM/BATH AND PEACEFUL OUTDOOR SPACES.



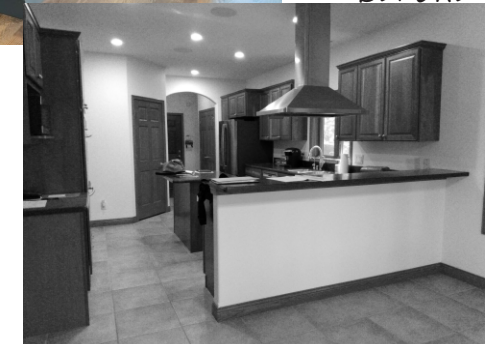
Degnan Design-Build-Remodel
 608.846.5963

abe@degnandesignbuildremodel.com
 www.degnandesignbuildremodel.com

4505 SHOOTING STAR AVE, MIDDLETON



BEFORE



NARI MEMBER PARTNER:
 BELLA DOMICILE

463 FARGO TRAIL, MIDDLETON



BEFORE



NARI MEMBER PARTNERS:
BRUNSELL LUMBER AND MILLWORK
DENISE QUADE DESIGN
GRAND APPLIANCE AND TV
NONN'S
SCHREFFLER CUSTOM WOOD FLOORING

SITE 3

THIS BRIGHT AND MODERN TRANSFORMATION COMPLETED 15 YEARS AFTER THE HOME'S CONSTRUCTION FEATURES ALL NEW KITCHEN CABINETS AND COUNTERTOPS, BEVERAGE STATION AND BUFFET ADDITIONS, AND REFINISHED HARDWOOD FLOORING. MAPLE CABINETS WERE FINISHED IN EARL GRAY AND IRISH CRÈME, AND THE LAYOUT WAS ADJUSTED TO INCREASE THE SIZE OF THE ISLAND, AND ANGLE AND RELOCATE THE REFRIGERATOR. THE HOOD HAS A CABINET FRONT, AND CAMBRIA QUARTZ BRITANNICA COUNTERTOPS ARE COMPLEMENTED BY A WHITE HERRINGBONE BACKSPLASH. THE NEW DINING BUFFET AND BEVERAGE STATION FEATURES OPEN SHELVING, GLASS DOORS AND LIGHT FIXTURES. A LARGER KITCHEN WINDOW BRINGS IN MORE NATURAL LIGHT.



Vive Home Transformations
608.437.6186

info@vivehometransformations.com
www.vivehometransformations.com

1114 SEMINOLE HWY, MADISON



BEFORE



SITE 5

FROM A SMALL AND DARK KITCHEN TO BIG, BRIGHT AND BEAUTIFUL! BECKMAN BUILDERS TOOK AN UNASSUMING GALLEY LAYOUT THAT WAS NEITHER FUNCTIONAL NOR AESTHETICALLY PLEASING AND EXPANDED INTO THE BACK YARD WITH A 12'X15' ADDITION TO HOUSE A NEW KITCHEN THAT BOASTS A FUNCTIONAL LAYOUT INCLUDING AN ISLAND, DRY BAR, DISPLAY SHELVING, DESIGNER TOUCHES AND AN ABUNDANCE OF NATURAL LIGHT.



Beckman Builders LLC
608.846.3341

karl@beckmanbuilders.com
www.beckmanbuilders.com

SITE 4

THIS 1950'S HOME HAD BEEN REMODELED SEVERAL TIMES IN ITS LIFETIME BUT DIDN'T SERVE THE NEEDS OF THE CURRENT HOMEOWNER. THEY WANTED TO PERSONALIZE THE DESIGN AND THE LAYOUT OF THE KITCHEN AND PRIMARY SUITE. TWO TONE COCONUT & FOREST GREEN CABINETS WAS SELECTED WITH ACCENTS OF GOLD IN THE BACKSPLASH TILE. THE PRIMARY BATHROOM WAS ENLARGED AND EXPANDED INTO THE BEDROOM TO ACCOMMODATE A LARGER SHOWER. A BLACK & WHITE COLOR PALETTE WAS SELECTED FOR THE NEW BATH & INCORPORATED IN THE FLOOR AND SHOWER WALLS. THE END RESULT GAVE THE HOMEOWNERS THE FUNCTION AND APPEARANCE THEY WERE LOOKING FOR!



Time 2 Remodel LLC
608.212.0633
curt@time2remodel.com
www.time2remodel.com

5501 DORSETT DRIVE, MADISON

BEFORE



NARI MEMBER PARTNERS:
GERHARDS KITCHEN & BATH STORE
THE GRANITE SHOP OF MADISON
THE TILE SHOP

SITE 6

THIS 1950'S HOME HAD A DIY ADDITION BUILT IN THE 1970'S THAT INCLUDED THE KITCHEN. THE NEW YOUNG FAMILY WAS LOOKING TO CHANGE THE LAYOUT OF THE CABINETS TO ALLOW EASE OF COOKING FOR ALL FAMILY MEMBERS AND TO UPDATE THE APPEARANCE OF THE SPACE. A LARGE NAVY-BLUE ISLAND WAS DESIGNED WITH COMPLEMENTING WARM GRAY TONE PERIMETER CABINETS FOR STORAGE. THEY ALSO WANTED TO EXPAND AND UPDATE THE ADJOINING HALF BATH. NEW FIXTURES, AN ELONGATED SUBWAY TILE TUB SURROUND AND NAVY-BLUE VANITY WERE SELECTED. THE RESULTING CHANGES MODERNIZE THE TWO SPACES FOR THE FAMILY TO ENJOY AND ENTERTAIN IN!



Time 2 Remodel LLC
608.212.0633
curt@time2remodel.com
www.time2remodel.com

4314 KEATING TERRACE, MADISON

BEFORE



NARI MEMBER PARTNERS:
GERHARDS KITCHEN & BATH STORE
THE GRANITE SHOP OF MADISON

*AFTER RENDERING -
COME SEE HOW IT TURNED OUT*

